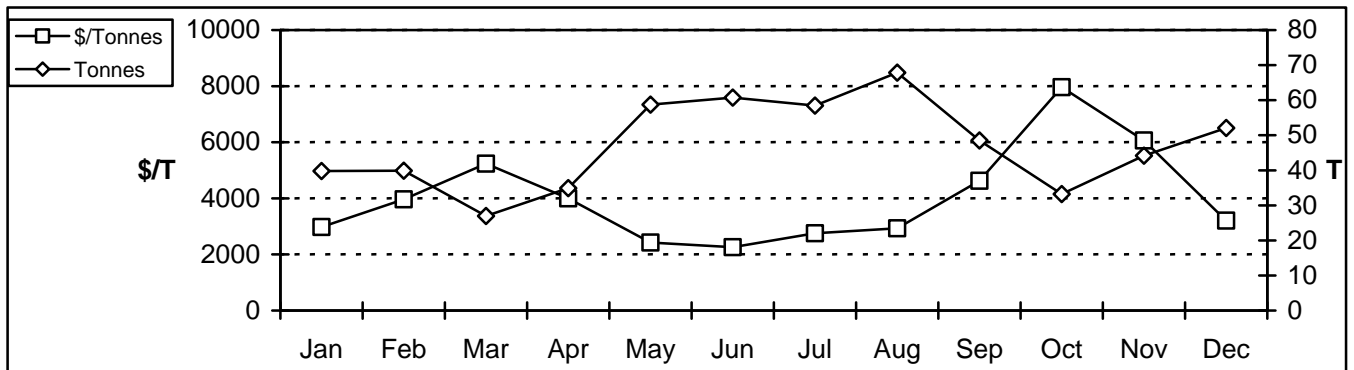


YEAR Brisbane PASSIONFRUIT (All Origins)



PASSIONFRUIT		Jan	Feb	Mar	Apr	May	Jun	Jul	Aug	Sep	Oct	Nov	Dec	YEAR
PRICE	\$/T	2977	3963	5237	4001	2424	2260	2755	2933	4628	7965	6065	3205	3752
THROUGHPUT	Tonnes	39.775	39.865	26.955	34.905	58.735	60.760	58.455	67.850	48.525	33.215	44.155	52.060	565.255
	Package	7955	7973	5391	6981	11747	12152	11691	13570	9705	6643	8831	10412	113051
Panama	High	32.00	32.00	60.00	50.00	24.00	16.00	20.00	20.00	36.00	60.00	45.00	24.00	60.00
	Avg	14.95	20.25	20.50	17.53	11.82	9.76	10.57	13.17	18.62	27.12	19.95	13.43	16.47
	\$/18LCtn	6.00	10.00	8.00	6.00	6.00	6.00	4.00	8.00	10.00	12.00	8.00	8.00	4.00
Purple	High	40.00	45.00	80.00	60.00	30.00	24.00	40.00	30.00	75.00	100.00	80.00	50.00	100.00
	Avg	14.86	19.67	27.16	21.40	12.25	12.10	15.24	15.56	25.16	45.30	35.66	16.43	21.73
	\$/18LCtn	4.00	4.00	4.00	6.00	6.00	4.00	4.00	6.00	8.00	15.00	8.00	5.00	4.00
Yellow	High				20.00	10.00	12.00	12.00	12.00					20.00
	Avg				9.43	7.77	11.00	11.00	11.00					10.04
	\$/18LCtn				6.00	6.00	10.00	10.00	10.00					6.00
All Varieties	High	40.00	45.00	80.00	60.00	30.00	24.00	40.00	30.00	75.00	100.00	80.00	50.00	100.00
	Avg	14.91	19.96	23.83	16.12	10.61	10.95	12.27	13.24	21.89	36.21	27.81	14.93	17.54
	\$/18LCtn	4.00	4.00	4.00	6.00	6.00	4.00	4.00	6.00	8.00	12.00	8.00	5.00	4.00

WARNING: Newly generated historic data may vary from previously published data. Changes are made with a view to providing the most accurate data possible for comparative purposes. It is most unlikely that significant changes will occur in published prices Copying or permitting the copying of this Report without written consent, or the creation of a derivative work, including a database (whether in electronic form or otherwise) is in breach of Copyright Legislation.